



CW2-60506C

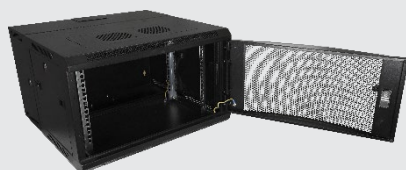
CW2-60509C

CW2-60512C

CW2-60606C

CW2-60609C

CW2-60612C



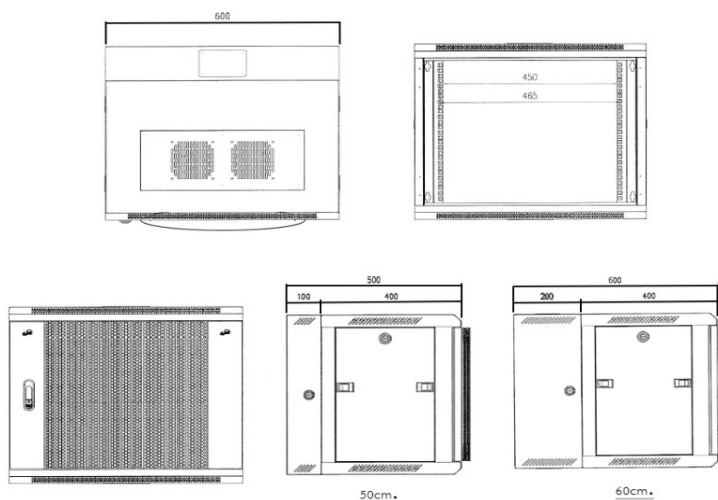
CURVE WALL RACK

Depth 50cm. and 60cm. (Double Part)

Scope of Application

The premium innovation design, an elegant appearance, delivered with best enterprise service, support and reliability. LINK Curve Wall Rack offered high strength product, high durability and efficiency at work, also can support to install 19"Standard's equipment.

Drawing



*For reference only

Technical Standard

- ANSI/EIA-310D
- IEC 60297-1
- IEC 60297-2
- BS 5954 Part : 2
- DIN 41494
- 19"Rack Standard
- ISO 9001 :2015
- ISO 14001 : 2015



Features

- Cabinet made from Electro-Galvanized Steel Sheet and 4-Mounting pole.
- Front door designed in curve perforated for ventilation, swing handle lock was provided.
- Back part with hanger slots (steel frame) and provided 4 sets of Wall mounting screw.
- Mounting pole can be adjustable with screened Rack Unit (U) on the pole.
- Cable access at the top and the base.
- Raised roof with vented and perforated surrounding for ventilation, can be mounted maximum 3 ventilating fans.
- Provided nuts and screws according to no. of Rack unit (U) for convenience to install network equipment.
- Both side panels are easy to open by slide lock and provided security lock for installation and maintenance.
- 120° opening door and can change the opening direction.
- Grounding system connected between cabinet's structure and front door.
- Supplementary accessories: shelves, drawers, fan sets, power distribution unit.

Material

- Frame : 1.2 mm Electro-galvanized steel sheet
- Rear and Side Panels : 1.2 mm Electro-galvanized steel sheet
- Solid blanking plate : 1.2 mm Electro-galvanized steel sheet
- Curve Perforated Door : 1.2 mm Electro-galvanized steel sheet
- Mounting Pole : 2.0 mm Electro-galvanized steel sheet with Zinc coated
- Electrostatic powder coating, Black (RAL9004)

Order Information

Part number	Description	U Height (U=4.45 cm.)	Width (cm.)	Depth (cm.)	Height (cm.)
CW2-60506C	19"LINK CURVE WALL RACK 6U, Depth 50cm., 2Part	6U	60	50	37
CW2-60509C	19"LINK CURVE WALL RACK 9U, Depth 50cm., 2Part	9U	60	50	50.5
CW2-60512C	19"LINK CURVE WALL RACK 12U, Depth 50cm., 2Part	12U	60	50	64
CW2-60606C	19"LINK CURVE WALL RACK 6U, Depth 60cm., 2Part	6U	60	60	37
CW2-60609C	19"LINK CURVE WALL RACK 9U, Depth 60cm., 2Part	9U	60	60	50.5
CW2-60612C	19"LINK CURVE WALL RACK 12U, Depth 60cm., 2Part	12U	60	60	64

Specifications subject to change without notice.

© 2023 LINK CORP. ALL RIGHTS RESERVED

www.linkcable.com

CW2-60XXXC-V1.4-080126