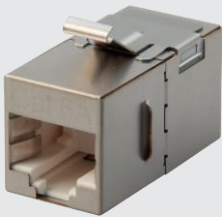




US-4007SIL

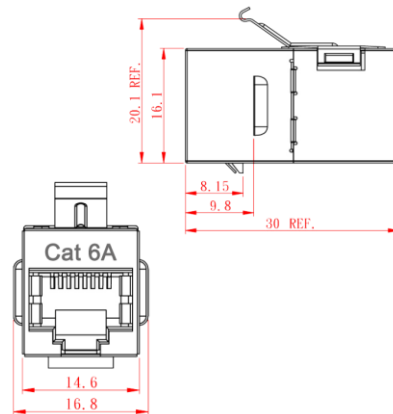


Shield CAT 6A In-Line COUPLER, Usable for Patch Panel

Scope of Application

LINK Shield CAT 6A In-Line COUPLER provides a 180° RJ45 jack-to-jack splice and complies with ISO/IEC 11801 Class EA and ANSI/TIA-568.2-D requirements for category 6A performance. The shield coupler is available in eight-position contact RJ45 style. It supports two patterns of T568A/B (Universal color pattern), which allows a simple operation with horizontal cables, which can easily be extended, and broken cables can be coupled with laying a new complete cable segment. The couplers utilize printed circuit board (PCB) technology to balance signal transmission of insertion loss. Available to use with Unload patch panel for easy installation.

Drawing



Technical Standard

- ANSI/TIA-568.2-D Category 6A
- ANSI/TIA-568-C.2 Category 6A
- ISO/IEC 11801:2017 class EA
- UL 1863
- IEC 60512-27-100
- Approvals UL listed no. E196947
- RoHS Compliant



Construction and Properties

Jack Contact	Material	Phosphor bronze with 50 micro inch of gold over nickel plated
Contact holder	Material	ABS, UL94V-0
Coupler Housing	Material	ABS, UL94V-0
Shielded Case	Material	Brass with nickel plated
Bracket	Material	SUS304

Electrical Characteristics

Insulated Resistance	500 Mega ohms minimum
Dielectric Withstanding	≤1000 V
Current Rating	≤1.5 Amps
DC Resistance	≤0.1 Ohm maximum
Contact Resistance	20 Milli ohms maximum.

Physical Properties

Jack contact	Durability	750 mating cycles
	Force	100 grams minimum
Temperature	Storage	-40°C to 80°C
	Operation	-20°C to 80°C

Application

- 2.5G/5G BASE-T (IEEE 802.3bz)
- 10G BASE-T (IEEE 802.3an 10Gigabit Ethernet)
- 1000 BASE-T (IEEE 802.3ab Gigabit Ethernet)
- 1000 BASE-TX (TIA/EIA-854)
- 100 BASE-TX (IEEE 802.3u Fast Ethernet)
- 10 BASE-T (IEEE 802.3i Ethernet)
- 52/155/622Mbps and 1.2Gbps ATM
- 4/16 Mbps Token Ring
- IEEE 802.3af (PoE), IEEE 802.3at (PoE+), IEEE 802.3bt (Type4)
- TP-PMD, TPDDI, ISDN, CDDI, VoIP
- EtherCAT Industrial standard, HDBaseT 2.0 standard
- Baseband, Broadband
- Digital and analog for data, video and audio application

Order Information

Part number	Description	Color	Package
US-4007SIL	Shield CAT 6A In-Line COUPLER, usable for Patch Panel	Metallic	Pack

Specifications subject to change without notice.

© 2023 LINK CORP. ALL RIGHTS RESERVED

www.linkcable.com

US-4007SIL-V1.0-230324