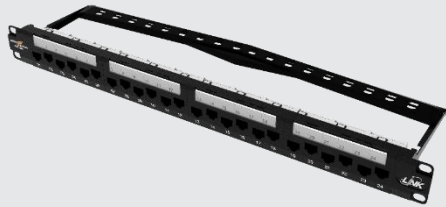




US-3226A

LINK AMERICAN STANDARD

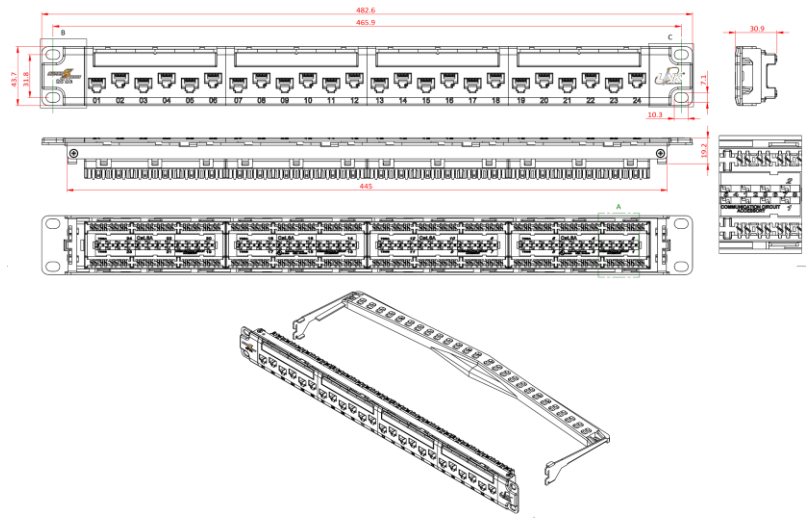


w/Cable Management

Scope of Application

CAT 6A UTP patch panel compliant ISO/IEC 11801 Class EA and ANSI/TIA-568.2-D requirements for category 6A performance. The panel is steel with black powder coating with LINK logo on the front. The patch panel are utilized a printed circuit board (PCB) technology to balanced signal transmission of insertion loss and crosstalk from 1 to 500MHz. The staggered design on the rj45 port for helps to reducing Alien Crosstalk. Unique Pyramid design IDC row with cover is convenient for installing stiff & larger diameter Cat6A UTP cable. Cable management allows individual to be fixed with cable tie each cable. Support dual 110IDC termination block with durable. To complete cable tie and a set of M6 cage nut.

Drawing



Technical Standard

- ANSI/TIA-568.2-D Category 6A
- ISO/IEC 11801:2017 class EA
- EN 50173-1 Category 6A
- UL 1863
- IEC 60603-7, IEC 60512-27-100
- RoHS Compliant
- Approvals UL listed file no. E196947



Construction and Properties

Jack Contact	Material	Phosphor bronze with 50 μ-inch gold plating
IDC Contact	Material	Phosphor bronze Tin over nickel plating
Jack Module	Material	Polycarbonate, UL94 V-0
IDC Block	Material	High-Impact Polycarbonate, UL 94 V-0
Panel	Material	SPCC
Management Bar	Material	ABS, UL94V-0
Label	Material	Paper two color (White and orange)
Mounting	Width	19-inch Standard Rack (EIA 310D)
	Height	1.75 inch (1U)

Electrical Characteristics

Insulation Resistance	500 Mega ohms minimum
Dielectric Withstanding	≤1000 V
Current Rating	≤1.5 Amps
DC Resistance	≤0.2 Ohm maximum
Contact Resistance	20 Milli ohms maximum.

Physical Properties

Pulling Force	89 N (20lbs) minimum	
Jack contact	Durability	≥ 750 times
	Force	100 grams minimum
IDC contact	Durability	200 re-termination cycles
Accommodate	Wire Gauge	24-22 AWG solid and stranded bare copper
	Insulation Diameter	0.8mm-1.2mm.
	Cable Diameter	6mm-8.5mm.
Termination Style	110IDC	
Wiring Pattern	T568A/T568B (universal color pattern)	
Temperature	Storage	-40°C to 80°C
	Operation	-20°C to 80°C



Application

- 2.5G/5G BASE-T (IEEE 802.3bz)
- 10G BASE-T (IEEE 802.3an 10Gigabit Ethernet)
- 1000 BASE-T (IEEE 802.3ab Gigabit Ethernet)
- 1000 BASE-TX (TIA/EIA-854)
- 100 BASE-TX (IEEE 802.3u Fast Ethernet)
- 10 BASE-T (IEEE 802.3i Ethernet)
- 52/155/622Mbps and 1.2Gbps ATM
- 4/16 Mbps Token Ring
- IEEE 802.3af (PoE), IEEE 802.3at (PoE+), IEEE 802.3bt (Type4)
- TP-PMD, TPDDI, ISDN, CDDI, VoIP
- EtherCAT Industrial standard, HDBaseT 2.0 standard
- Baseband, Broadband
- Digital and analog for data, video and audio application

Order Information

Part number	Description	Port	Package
US-3226A	CAT 6A UTP Patch Panel 24 Port, w/Cable Management	24	Box

Specifications subject to change without notice.

© 2023 LINK CORP. ALL RIGHTS RESERVED

www.linkcable.com

US-3226A-V1.0-291123