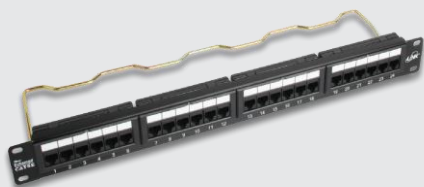




US-3024

LINK AMERICAN STANDARD



LINK Logo



Label

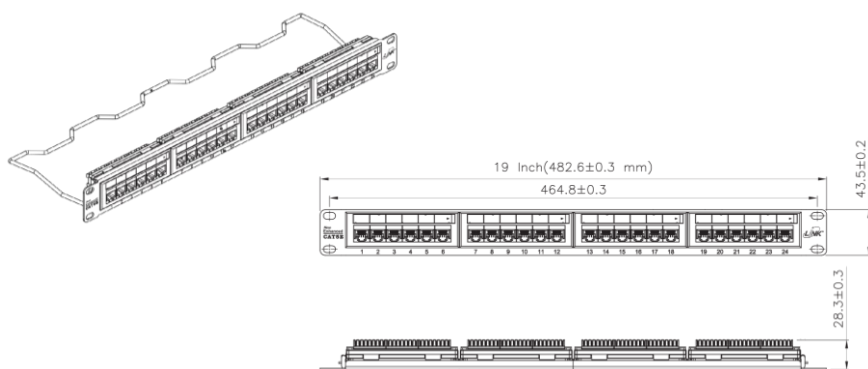


Color Code

Scope of Application

LINK Category 5E patch panel compliant ISO/IEC 11801 and ANSI/TIA-568.2-D requirements for category 5E performance. The panel is Aluminum light weight with black anodize and showed the LINK logo on the front. The patch panel are utilized a printed circuit board (PCB) technology to balanced signal transmission of insertion loss and crosstalk from 1 to 100MHz. Design new version of Label with transparent cover. Knock down support bar can be separated from panel. Support dual 110 IDC and 45°KRONE termination block with durable. The patch panel supplies with support bar and cable tie in colorful box (nut and screw included).

Drawing



Technical Standard

- ANSI/TIA-568.2-D Category 5E
- ANSI/TIA-568-C.2 Category 5E
- ISO/IEC 11801:2017 class D
- EN 50173-1 Category 5E
- UL 1863
- IEC 60603-7, FCC Part 68 Subpart F
- UL and ETL Verified to Category 5E
- RoHS Compliant
- Approvals UL listed file no. E196947.
- Intertek Certification no. 3159185CRT



Construction and Properties

Jack Contact	Material	Phosphor bronze with 50-60 micro inch nickel plated and 50 micro inch of gold over nickel plated in contact area
IDC Contact	Material	Phosphor Bronze with over 100 micro inch tin plated
Jack Module	Material	ABS High-Impact, UL 94 V-0
IDC Block	Material	Polycarbonate High-Impact, UL 94 V-0
Panel	Material	Aluminum light weight with black anodize
	Thickness	1.5 mm.
Support Bar	Material	SPCC steel light weight
	Diameter	4.0 mm.
Label	Material	White paper inserts within clear plastic cover
Mounting	Width	19-inch Standard Rack (EIA 310D)
	Height	1.75 inch (1U) for 24 ports

Electrical Characteristics

Insulation Resistance	500 megaohms minimum
Dielectric Withstanding	1000 V AC
Current Rating	1.5 Amps
DC Resistance	0.1 ohm maximum
Contact Resistance	20 milliohms maximum

Physical Properties

Pulling Force		89 N (20 lbs.) minimum
Jack contact	Durability	800 mating cycles
	Force	100 grams minimum
IDC contact	Durability	200 re-termination cycles
Accommodate	Wire Gauge	26-22 AWG solid and stranded bare copper
	Insulation Diameter	0.80mm – 1.20mm
	Cable Diameter	5 mm - 9 mm
Termination Style		Dual 110 IDC and KRONE
Wiring Pattern		T568A/T568B (universal color pattern)
Temperature	Storage	-40°C to 80°C
	Operation	-40°C to 80°C



PERFORMANCE CHARACTERISTIC (meet or exceed ANSI/TIA-568.2-D Category 5E)

Frequency (MHz)	Insertion Loss (dB)	NEXT (dB)	FEXT (dB)	Return Loss (dB)
1	0.01	87.5	86.8	58.9
4	0.02	76.8	76.3	50.3
8	0.02	70.9	70.7	45.7
10	0.03	69.3	69.1	44.1
16	0.03	65.0	65.5	40.5
20	0.06	63.2	63.5	38.8
25	0.06	61.3	61.7	37.1
31.25	0.04	59.1	60.2	35.2
62.5	0.06	52.8	54.9	29.7
100	0.08	47.6	51.2	26.2

Application

- 2.5G BASE-T (IEEE 802.3bz)
- 1000 BASE-T (IEEE 802.3ab Gigabit Ethernet)
- 1000 BASE-TX (TIA/EIA-854)
- 100 BASE-TX (IEEE 802.3u Fast Ethernet)
- 10 BASE-T (IEEE 802.3i Ethernet)
- 52/155/622Mbps and 1.2Gbps ATM
- 4/16 Mbps Token Ring
- IEEE 802.3af (PoE), IEEE 802.3at (PoE+)
- TP-PMD, TPDDI, ISDN, CDDI, VoIP
- EtherCAT Industrial standard, HDBaseT 2.0 standard
- Baseband, Broadband
- Digital and analog for data, video and audio application

Order Information

Part number	Description	Port	Package
US-3024	Category 5E, Patch Panel w/Support bar	24	Box

Specifications subject to change without notice.

© 2023 LINK CORP. ALL RIGHTS RESERVED

www.linkcable.com

US-3024-V1.0-220324