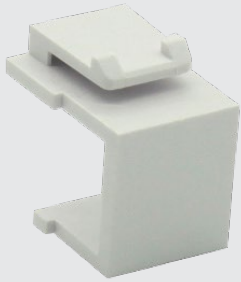




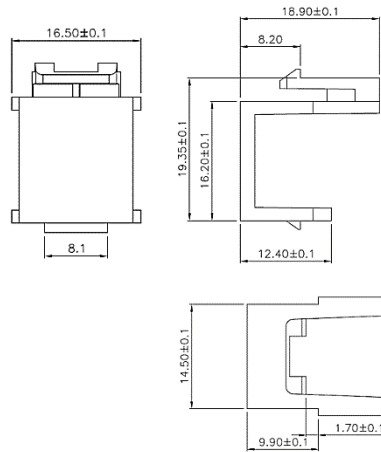
US-2201



Scope of Application

Used with Face Plates, Multimedia Panel, Unload Patch Panel or any Panel Which Compatible to RJ45 Snap-in modular

Drawing



Technical Standard

- RoHS Compliant



## TECHINCAL SPECIFICATION

<b>MATERIAL</b>	ABS, UL94V-0
-----------------	--------------

## Order Information

Part number	Description	TYPE of ADAPTER
US-2201	Blank Insert	-