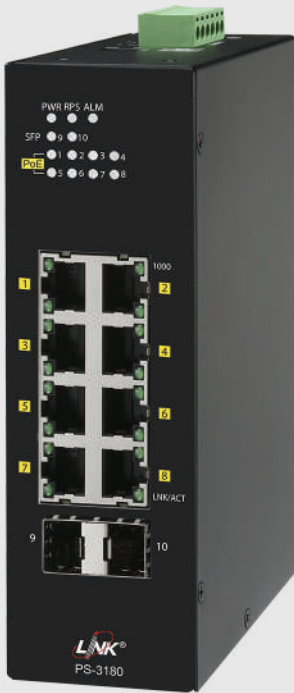




PS-3180



LINK AMERICAN STANDARD

Scope of Application

Realizing the essentiality in ease of use for 24/7 surveillance for today's society, LINK develops PS-3180 Lite Managed Industrial PoE+ switch. The PS-3180 is working on OSI Layer 2 and engineered for outdoor installation with hardened components and enclosed in a case which can operate in wide temperature from -40°C to 75°C, and playful even in harsh environments providing reliable surveillance.

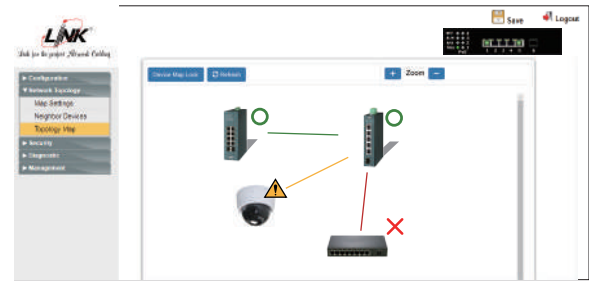
The switch is compiled with intelligent PoE+ (IEEE 802.3af/at) function on 8-Gigabit copper ports and allows to supply up to 30W per port power budget over the single Ethernet cable to satisfy Powered Devices such as Wireless AP, VoIP phones and IP cameras eliminating the need of external power outlets.

The 2-slot 100Base-FX/1000Base-X SFP give the advantages of configuring ring topologies for a safe, reliable and long distance Gigabit connectivity. In addition, the switch offers an easy to use of management functions to allow configuration and monitoring. Designed with sufficient beneficial features, PS-3180 can be considered as a reliable option for harsh outdoor surveillance.

Features Highlight

Introducing the Topology Map

Topology Map embedded Element Management System that allows users to view the topology map of connected devices and neighboring switches along with the link status. Its LLDP feature allows it to advertise its identities and capabilities on the wired Ethernet. This map like feature simplifies the network connection viewing and helps patterning by clicking on the icon.



Dashboard

The dashboard is an intelligent system provides apparent views of real-time switch parameters in an engaging, easy-view format for the end-users. Dashboard's at-a-glance designs with the color scheme enable the users for easy understanding and troubleshooting within the device and connected network.



Robust Switch Performance

With a aluminum case, surge and ESD protection, the PS-3180 provides a high level of immunity against electromagnetic interference and heavy electrical surges, thus facilitating easy deployment in demanding environments. In addition, the PS-3180 offers high performance switch architecture with eight 10/100/1000Base-T ports and one 100Base-FX/1000Base-X Ethernet SFP slot to meet the requirements of high-bandwidth access in wide operating temperatures.





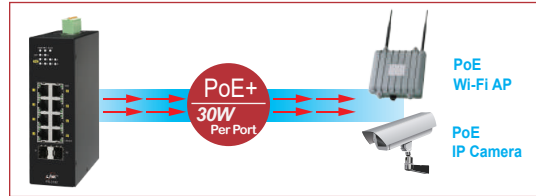
## Features Highlight

### Future-proof Fiber Connectivity with Dual 100FX/Gigabit SFP Slots

With two multirate SFP slots, the PS-3180 easily establishes fiber channel for gigabit Ethernet connectivity and allows to take advantage of fiber based daisychain topology. The switch provides long distance, high-speed fiber connectivity while offering enhanced noise immunity and data security across deployed systems. The PS-3180 is a well-suited robust, cost-effective and future-proof solution for fiber based surveillance networks.

### High-Power Budget for PoE Network Devices

To fulfill the growing demand of high-bandwidth, high-power PoE for network applications and eliminating the cost of electrical cabling and circuits, the PS-3180 is designed under IEEE 802.3at standard PoE+. With 240W PoE power budget capability for whole system, the switch allows simple “plug-n-play” PoE for various types of high power consuming PoE devices. This makes the PS-3180 a very convenient solution for applications far away from power outlets satisfying PoE extension applications in much longer distances.



### Intelligent PoE Alive Checking

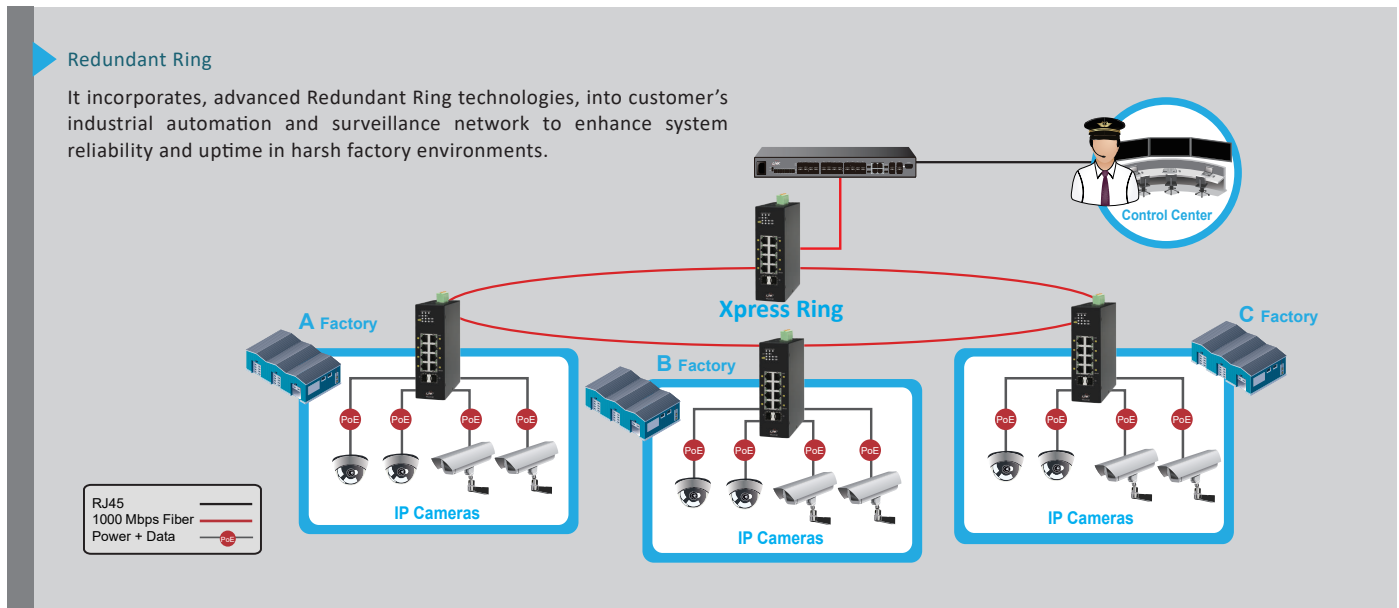
The PS-3180 is designed with intelligent PoE+ features to utilize power more efficient. To monitor real-time status of PDs, the switch sends alive-checking packets to PDs. If a PD fails to respond, the switch’s PD live check feature detects the failure and reactivates the PD. This reduces management burden and increases system reliability.



### Simplified Installation w/ Compact Size

The PS-3180 provides varied choice of deployment locations even in small space, harsh environments, quick and easy installation way by its compact size. Every PS-3180 is equipped with auto MDI/MDI-X and auto-negotiation on all ports for simple connection to other switches and hubs. When a compliant device is attached, the power supplied will automatically detect and classify to fit the device. With diagnostic LEDs panel, the PS-3180 allows you to know switch status and simplify troubleshooting.

## Applications



## Technical Data

| Standards          |  |
|--------------------|--|
| IEEE 802.3         | 10Base-T   |
| IEEE 802.3u        | 100Base-TX, 100Base-FX   |
| IEEE 802.3ab       | 1000Base-T   |
| IEEE 802.3z        | 1000Base-SX/LX   |
| IEEE 802.3x        | Flow Control   |
| IEEE 802.3af       | PoE  |
| IEEE 802.3at       | PoE+   |
| IEEE 802.3az       | Energy Efficient Ethernet (EEE)  |
| IEEE 802.1ab       | LLDP   |
| IEEE 802.1Q        | VLAN Tagging   |
| IEEE 802.1d        | Spanning Tree Protocol (STP)   |
| IEEE 802.1w        | Rapid Spanning Tree Protocol (RSTP)  |
| IEEE 802.1p        | QoS  |
| IEEE 802.1x        | Port-based authentication  |
| Interface          |  |
| Ports              | 8 x 10/100/1000Base-T, RJ45 port with PoE/PoE+<br>2 x 100Base-FX/1000Base-X, SFP port  |
| DIP Switch         | ALM: PWR, RPS FUN: Storm, QoS, 100FX   |
| LED Panel          | PWR, RPS, ALM, SFP, PoE, 1000, LNK/ACT   |
| Performance        |  |
| Switching Capacity | 20Gbps   |
| Forwarding Rate    | 14.9Mpps   |
| Packet Buffer Size | 4.1Mbit  |
| MAC Table Size     | 8K   |
| Jumbo Frame Size   | 10KBytes   |
| SDRAM              | 128MB  |
| Flash Memory       | 32MB   |
| Features           |  |
| Management         | CLI, Telnet, SSH, HTTP, HTTPS, SNMP v1/v2c, SNMP v3, SNMP Trap, Syslog, Management VLAN, SNTp, Configuration Backup/Restore, DHCP Client, Port Mirroring, Firmware upgradable, LLDP Server (service) control, Port Utilization, IPv4 Client Alarm Information, ModbusTCP, Power Down trap Topology Map, Dashboard, Installation Wizard Port Configuration (enable/disable, speed/duplex), ONVIF, Port Statistic, User Account with authority System reboot from remote side, Web GUI |
| Reliability        | STP/RSTP<br>ERPS v1/v2, Code redundancy  |
| VLAN               | 4094 VLAN IDs available<br>Port-based VLAN, Port Isolation   |
| Traffic Control    | QoS, Flow Control, IGMP v1/v2/v3 Snooping, Traffic Monitor (Abnormal Traffic Detection), Storm Control, Port Isolation, Loop Detection Storm alarm threshold per port  |
| Security           | ACL (Access control list), Port Security (MAC limit) Port-based 802.1X, BPDU Guard<br>BPDU Filter, ROOT Guard, Trusted Managed Host  |
| PoE/PoE+           | PoE Scheduling, PD Alive Check, PoE Power on/off, PoE Priority, Power budget control per system, Power budget control per port, Power delay  |

| Power                      |  |                          |
|----------------------------|--|--------------------------|
| Input Voltage              | Primary: 48V to 57V DC   |                          |
|                            | Redundant: 48V to 57V DC   |                          |
| Power Connection           | 6-pin Terminal block<br>(Primary/Redundant Input)  |                          |
| Input Polarity Protection  | Present  |                          |
| Voltage Drop Alarm         | Primary/Redundant Power Input  |                          |
| Alarm Relay                | One relay output with current carrying capacity of 1A @ 24V DC   |                          |
| Power Consumption          | System: 10W<br>PoE Power Budget: 240W (Full loaded)  |                          |
| ESD Protection             | 4KV, 8KV (contact/air)   |                          |
| Surge Protection           | Ethernet port: 6KV Power input: 1KV  |                          |
| Mechanical and Environment |  |                          |
| Housing                    | Metal (IP30 Protection)  |                          |
| Mounting                   | DIN-Rail   |                          |
| Operating Temperature      | -40°C to 75°C  |                          |
| Storage Temperature        | -40°C to 85°C  |                          |
| Operating Humidity         | 5 to 95% RH (non-condensing)   |                          |
| Storage Humidity           | 5 to 95% RH (non-condensing)   |                          |
| Weight                     | 560g   |                          |
| Dimension (WxHxD)          | 50 x 160 x 120 mm  |                          |
| Certifications             |  |                          |
| Safety                     | UL/IEC/EN 60950-1  |                          |
| FCC                        | Part 15 Subpart B Class A  |                          |
| CE                         | EMI  | EN 55011                 |
|                            |  | EN 55032                 |
|                            |  | EN 61000-6-4             |
|                            | EMS  | EN 55024                 |
|                            |  | EN 61000-6-2             |
|                            |  | IEC/EN 61000-4-2 (ESD)   |
|                            |  | IEC/EN 61000-4-3 (RS)    |
|                            |  | IEC/EN 61000-4-4 (Burst) |
|                            |  | IEC/EN 61000-4-5 (Surge) |
|                            |  | IEC/EN 61000-4-6 (CS)    |
| IEC/EN 61000-4-8 (PFMF)    |  |                          |
| Shock                      | IEC 60068-2-27   |                          |
| Freefall                   | IEC 60068-2-32   |                          |
| Vibration                  | IEC 60068-2-6  |                          |
| Ordering Information       |  |                          |
| PS-3180                    | 8-Port Lite Managed GIGABIT PoE SWITCH<br>8 GE (PoE) + 2 SFP (GE)  |                          |
| Power Adapter (Included)   | 160W, 48V, Industrial Grade AC Power Adapter (-30°C to 60°C for 220V AC input)<br>(P/N: PS-9003, Y-Type) |                          |

**Note :**

\* The SFP communication distance upon the request (support 550m to 120km).

\* Specifications subject to change without notice.

## Drawing

